

Name _____

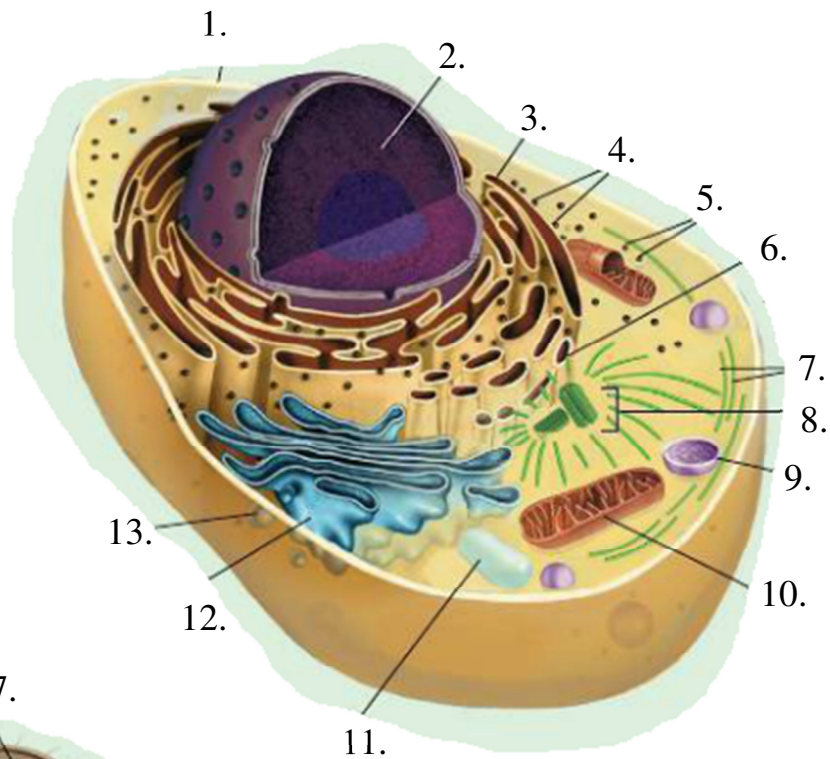
Organelle Review

A. Use the information on page 207 of your book to help you complete the first two columns of the chart to review organelles and their functions. Then be sure to put a check in the appropriate column(s) (prokaryote, animal, or plant) to indicate which organelles are found in which types of cells.

Structure	Function	Prokaryote	Eukaryote: Animal	Eukaryote: Plant
	Contains DNA			
Vacuoles and Vesicles				
	Break down and recycle macromolecules			
	Maintains cell shape; moves cell parts; helps cells move			
Centrioles				
Ribosomes				
Endoplasmic reticulum				
	Modifies, sorts, and packages proteins and lipids for storage or transport out of the cell			
Chloroplasts				
Mitochondria				
	Shapes, supports, and protects the cell			
	Regulates materials entering and leaving cell; protects and supports cell			

B. Use the diagrams of a general animal cell, plant cell, and prokaryotic cell on page 206 of your book to label each of the organelles seen below.

ANIMAL CELL



PROKARYOTIC CELL

